

Lehr- und Versuchsgut Köllitsch

LANDESAMT FÜR UMWELT,
LANDWIRTSCHAFT
UND GEOLOGIE

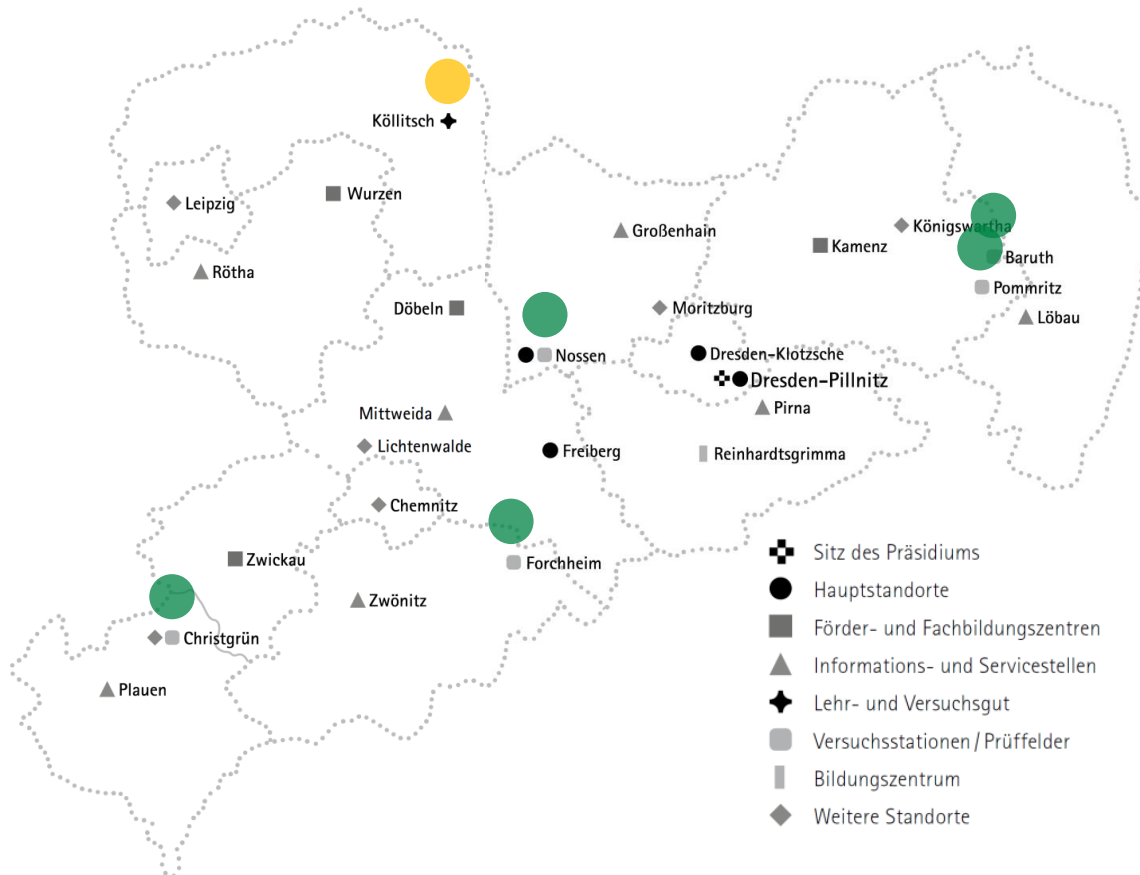


Freistaat
SACHSEN

„Ergänzungsexkursion IALB ins LVG Köllitsch 14.09.2023“



LfULG - subordinate agency of the Saxon State Ministry of Environment and Agriculture



28 locations

11 directorates

ca. 1.300 employees

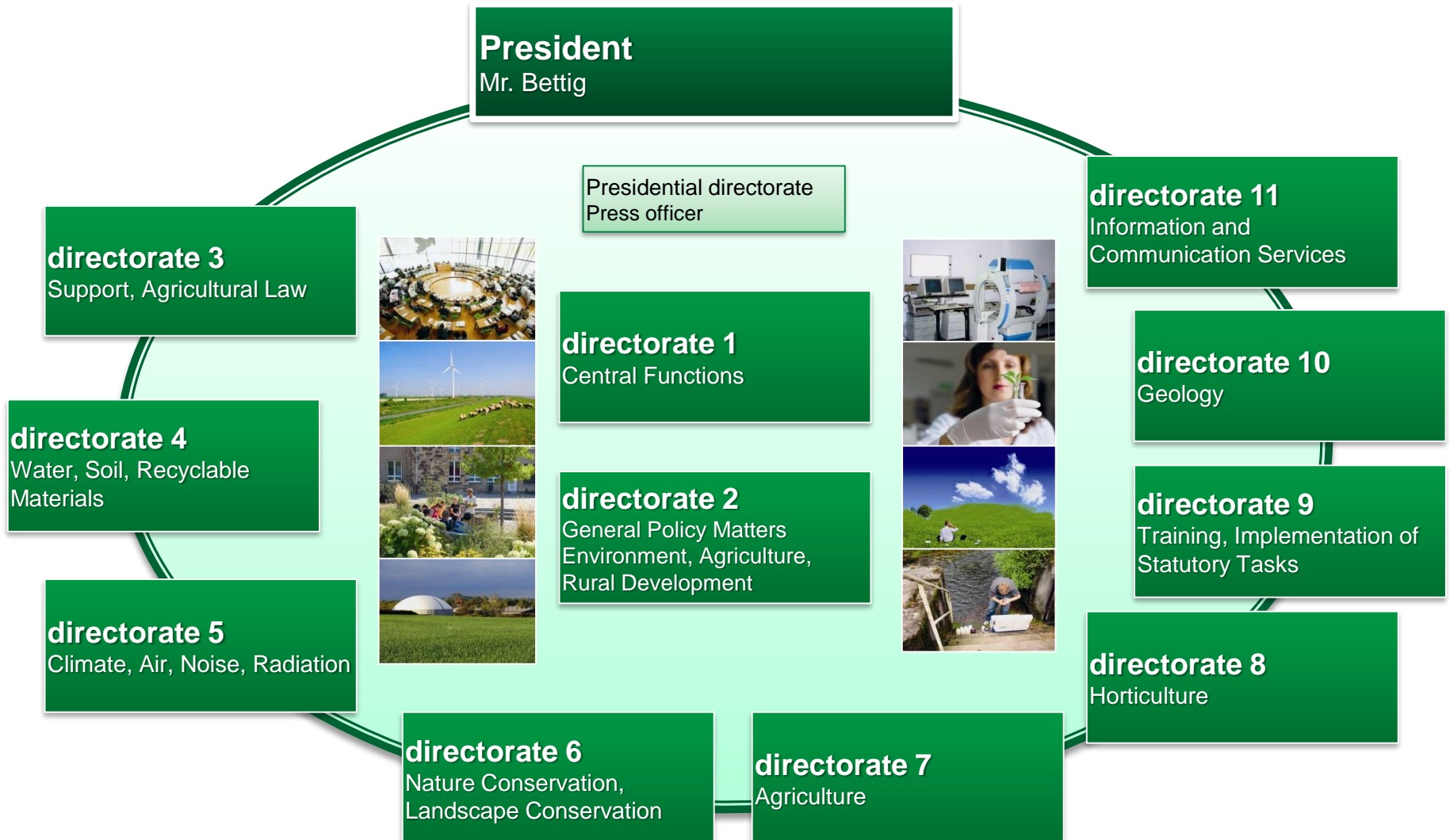
teaching & trial farm,
Köllitsch

trial centres

www.lfulg.sachsen.de

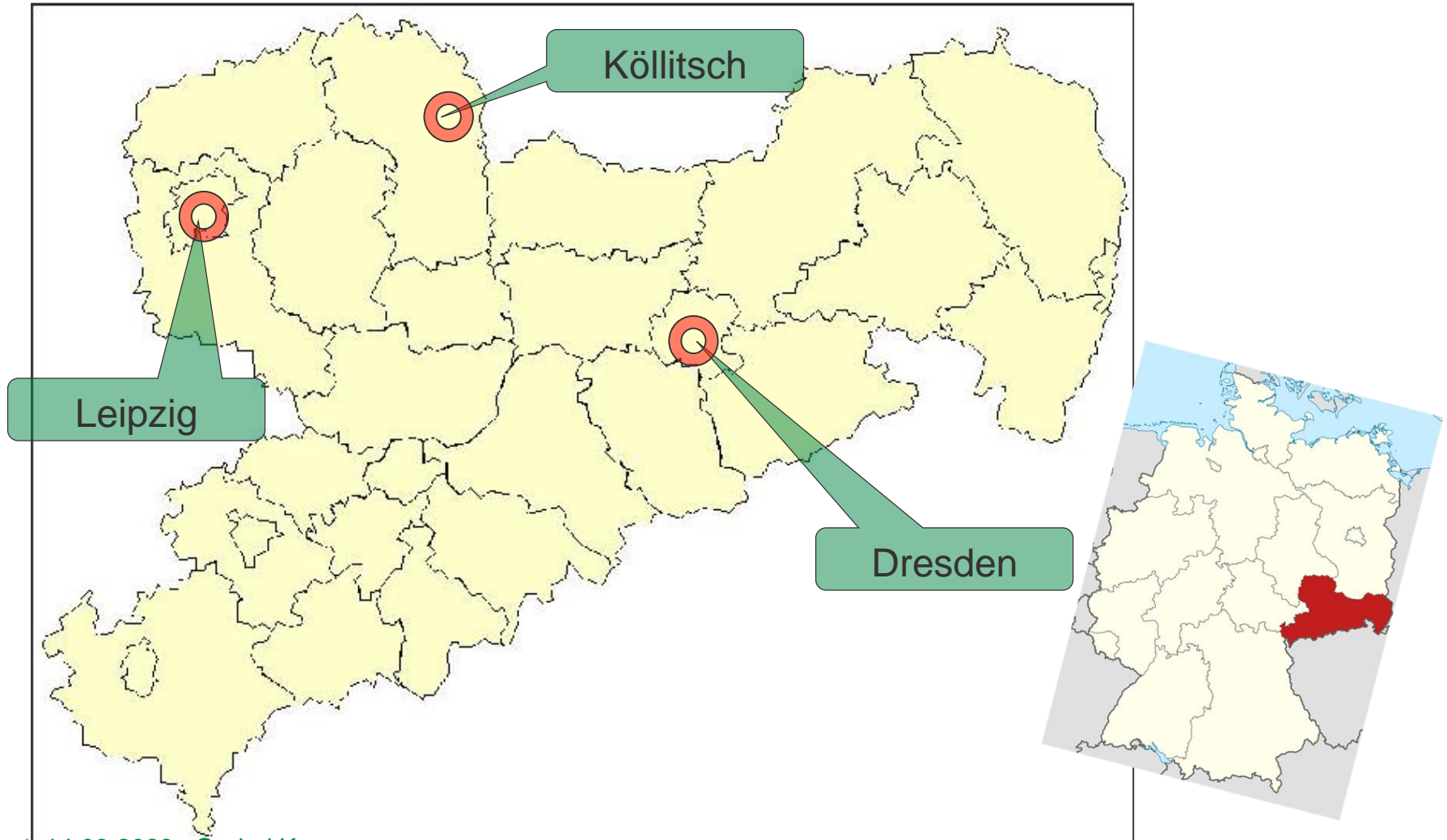
*Täglich für ein
gutes Leben.*

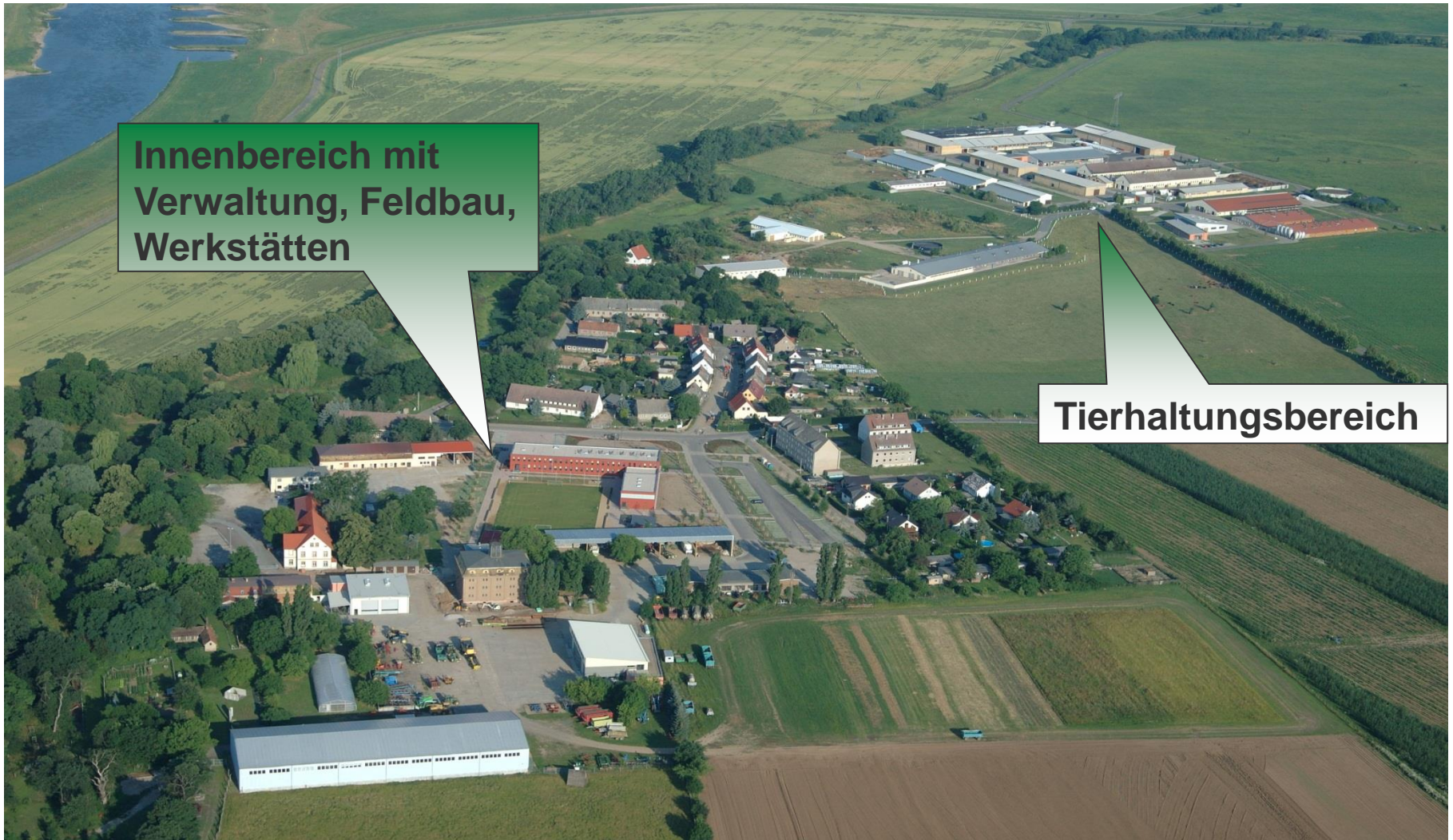
Structure of LfULG



LVG Köllitsch

Standort





**Innenbereich mit
Verwaltung, Feldbau,
Werkstätten**

Tierhaltungsbereich

department 78 Teaching and Experimental Farm, Intercompany Training

structure

Teaching and Trial Farm Köllitsch

Education,
Inter-company training



Transfer of knowledge
and technology, digital
agriculture



Trials and Applied
Research



Demonstration of „Best Practice “

Agricultural Farm

--- Efficiency of Ressources and Productivity of Agricultural Area ---

department 78 - Teaching and Experimental Farm, Inter-company vocational training

1.630 acre (**660** hectare) arable land (The main crops are wheat, barley and maize for silage).

650 acre (**263** hektare) grassland

200 Dairy cattle with offspring

100 Beef cattle (Angus, Limousin and Simmental)

120 sows with piglets and fattening pigs

200 sheep in two breeds

50 fallow deer

5 - 6 bee colonies (bee house)

Training workshops

Animal husbandry, product knowledge,
agricultural engineering, wood and metal
working, milk and meat processing, renewable
resources

Biogas plants, short rotational plantation,
renewable energies

Trainee hostel

7 14.09.2023 Ondrej Kunze



**Überbetriebliche
Ausbildung**

Anwenderseminare

**Technik & Bauen
Fachtage**

Spezialpraktika

Praktiker Seminare

Firmenschulungen

Sachkundelehrgänge

LVG Köllitsch

Angewandte Forschung

- Durchführung von Versuchen und Projekten im Rahmen der **angewandten Forschung** des LfULG



LVG Köllitsch

Schwerpunkt Bau

Neues Wohnheim



Lehrwerkstatt Technik der Innenwirtschaft



Speicher



Biogasanlage



LVG Köllitsch

